

# CHAPTER 6



1. WHAT IS AN ANTIEMETIC ?
2. ZOFRAN ( ONDANSETRON)  
ITS USES AND SIDE EFFECTS.
3. PROCHLORPERAZINE  
( COMPAZINE)
4. PROTON PUMP INHIBITORS  
PANTOPRAZOLE ( PROTONIX)  
OMEPRAZOLE ( PRILOSEC)  
LANSOPRAZOLE ( PREVACID)  
ESOMEPRAZOLE ( NEXIUM)
5. MYLANTA ( AN ANTACID)
6. LACTULOSE USED IN  
HEPATIC ENCEPHALOPATHY

OXYGEN



MR.O IS  
LETHARGIC,  
DUE TO LIVER  
FAILURE AND  
AN INCREASE  
IN HIS  
AMMONIA  
LEVEL.



FOR MORE HELPFUL CLINICAL  
INFORMATION, PLEASE READ:  
THE CLINICAL SETTING STEP BY STEP.



**STOP!**

**DID YOU CHECK  
THE DOCTOR'S  
ORDER FOR THE  
CORRECT ROUTE  
OF  
ADMINISTRATION?**



**Q- WHAT IS AN ANTIEMETIC?**

**A- AN ANTIEMETIC DRUG IS  
ONE THAT IS USED TO COMBAT  
NAUSEA AND VOMITING.  
THERE ARE MANY DRUGS IN  
THIS CATEGORY, BUT NOT ALL  
ARE MENTIONED IN THIS  
CHAPTER.**

**HELPFUL HINT :  
ALWAYS PAY CLOSE ATTENTION  
TO THE SIDE EFFECTS OF THESE  
DRUGS.**

**INTRAMUSCULAR  
INJECTIONS  
= IM**



**IV =  
INTRAVENOUS**



**SPECIAL  
PORT FOR  
IV INJECTIONS.**

# TRAUMA PREVENTION



ALWAYS WEAR SEAT BELT



DRIVING WITH POOR VISION MAY RESULT IN TRAUMA



DRIVING AFTER ALCOHOL INGESTION MAY RESULT IN TRAUMA

THIS NURSE WAS RUSHING TO THE ER TO HELP WITH A TRAUMA.



TRAUMA WITHIN A TRAUMA!



THE NURSE ON THE LEFT GOT DISTRACTED. SHE BEGINS TO MOVE THE PADDLES TOWARDS THE NURSE ON THE RIGHT, INSTEAD OF THE PATIENT.

TRAUMA CAN SOMETIMES BE PREVENTED!

THE NURSE ON THE LEFT PICKS UP THE DEFIBRILLATOR PADDLES.

# IN PACU

ANESTHESIOLOGIST

I NEED  
SOME  
ANSWERS.



## ZOFRAN (ONDANSETRON)

AN ANTIEMETIC USED TO TREAT PATIENTS WITH NAUSEA AND VOMITING POST SURGERY AND ON CHEMOTHERAPY. IT IS GIVEN ORALLY AND BY INJECTION.

SARA, A 25 YEAR OLD FEMALE, HAS JUST ARRIVED IN PACU AFTER KNEE SURGERY. SHE IS COMPLAINING OF NAUSEA. THE ANESTHESIOLOGIST (DOCTOR) AGREES TO GIVE ZOFRAN (ONDANSETRON).

### SIDE EFFECTS:

- FATIGUE,
- DRY MOUTH
- GASTROINTESTINAL PROBLEMS
- CHEST DISCOMFORT
- FACIAL SWELLING

## ZOFRAN (ONDANSETRON)



**PROCHLORPERAZINE (COMPАЗINE) IS AN ANTIEMETIC USED FOR PATIENTS ON CHEMOTHERAPY AND IN THE POST-OPERATIVE PERIOD.**

- SIDE EFFECTS INCLUDE:**
- MENTAL CONFUSION, DROWSINESS
  - TACHYCARDIA
  - SWEATING
  - MUSCLE STIFFNESS

MR.L IS IN THE ICU. HE RECEIVES CHEMOTHERAPY FOR CANCER. SOMETIMES, HE HAS BOUTS OF NAUSEA AND VOMITING. HIS DOCTOR ORDERED PROCHLORPERAZINE ( COMPАЗINE) IM . HIS NURSE GIVES A DOSE OF COMPАЗINE IM AS ORDERED.



THE NURSE RETURNS LATER TO FIND HIM VERY DROWSY, CONFUSED AND WITH A RAPID HEART RATE (TACHYCARDIA).

**PROCHLORPERAZINE (COMPАЗINE)**

# PROTON PUMP INHIBITORS

Q - WHAT ARE THEY?

A - A GROUP OF DRUGS USED TO DECREASE ACID PRODUCTION AND ALLOW FOR HEALING IN SUCH CONDITIONS AS :

- PEPTIC ULCER DISEASE
  - GASTRITIS
  - GERD ( GASTROESOPHAGEAL REFLUX DISEASE
- AND OTHER CONDITIONS ASSOCIATED WITH THE UPPER DIGESTIVE TRACT.



SARA HAS BEEN DIAGNOSED WITH GERD. HER DOCTOR ORDERED LANSOPRAZOLE (PREVACID). HER HEADACHE AND DIZZINESS ARE SIDE EFFECTS OF THIS GROUP OF DRUGS.

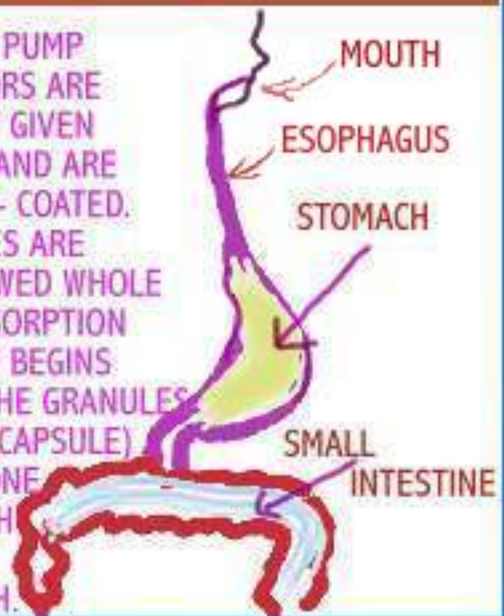
SIDE EFFECTS INCLUDE:

- HEADACHE, DIZZINESS
- DIARRHEA, NAUSEA AND VOMITING

PROTON PUMP INHIBITORS INCLUDE:

- PANTOPRAZOLE ( PROTONIX )
- OMEPRAZOLE ( PRILOSEC )
- LANSOPRAZOLE ( PREVACID )
- ESOMEPRAZOLE ( NEXIUM )

PROTON PUMP INHIBITORS ARE USUALLY GIVEN ORALLY AND ARE ENTERIC- COATED. CAPSULES ARE SWALLOWED WHOLE AND ABSORPTION USUALLY BEGINS AFTER THE GRANULES (IN THE CAPSULE) HAVE GONE THROUGH THE STOMACH.



# MYLANTA



TIM HAS A VERY STRESSFUL JOB. HE LOVES TO USE FOOD AS COMFORT.



TIM ORDERS A PIZZA AND DECIDES TO EAT THE WHOLE THING. HE GOES HOME AND DECIDES TO GO TO BED.



TIM IS AWAKENED BY A STOMACH ACHE.

BRAND NAMES : MYLANTA, MAALOX AND GAVISCON



AN ANTACID WHICH IS TAKEN ORALLY ( IN LIQUID OR CHEWABLE TABLETS ) AND IS USED TO TREAT CONDITIONS SUCH AS STOMACH UPSET, GAS AND HEARTBURN.

MYLANTA MAY REACT WITH DRUGS LIKE ANTIBIOTICS.

OXYGEN



**LACTULOSE IS USED IN THE TREATMENT OF HEPATIC ENCEPHALOPATHY.**

MR.O IS LETHARGIC, DUE TO LIVER FAILURE AND AN INCREASE IN HIS AMMONIA LEVEL.

**YES,  
WE  
KNOW!**



MR.O IS IN LIVER FAILURE, WHICH HAS PROGRESSED TO HEPATIC ENCEPHALOPATHY. HIS DOCTOR HAS ORDERED LACTULOSE TO REMOVE THE AMMONIA.

HEPATIC ENCEPHALOPATHY

**LACTULOSE**

THE LIVER IS DIVIDED INTO FOUR LOBES



LACTULOSE IS USED TO TREAT CONDITIONS SUCH AS : CHRONIC CONSTIPATION AND HEPATIC ENCEPHALOPATHY.

SIDE EFFECTS INCLUDE:

- DIARRHEA, GAS
- BLOATING
- ABDOMINAL CRAMPS

THE DAMAGED LIVER IS NO LONGER ABLE TO REMOVE AMMONIA AND OTHER TOXINS.

